

Features

- 17" x 19" x 6"
- 20 gauge, 304 stainless steel
- Top mount sink
- Easy-to-clean, brushed finish
- Spray insulated undercoating & sound pads
- Includes template & installation hardware
- Limited lifetime warranty
- 3-hole model



OPTIONAL ACCESSORY:

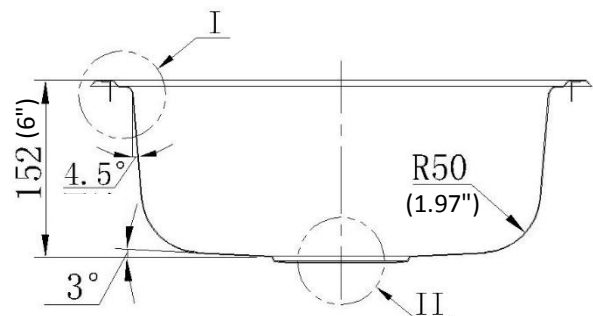
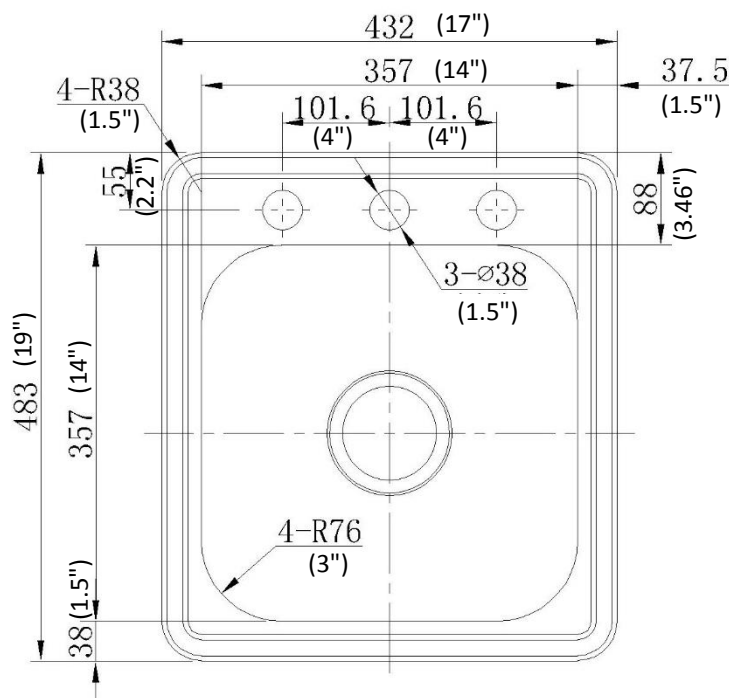
N/A

CODES:

ASME A112.19.3/CSA B45.4, cUPC

ADA Compliant

Product Diagram



1-877-500-SINK (7465)

WEST COAST WAREHOUSE: 510-667-9998



EAST COAST WAREHOUSE: 404-691-5088

WWW.AMERISINK.COM